

# Corporate Social Responsibility

**Abhijeet Group**  
**Chandwa, Latehar, Jharkhand**

## Earlier Profile of Area

- **Barren Land**
- **Meager Agricultural Activities**
- **No Means of Livelihood**
- **Extreme Poverty**
- **Least Education**

# **Lights to more than 100 villages By constructing 33 KV Transmission Line From Kudu to Chandwa**

# Strengthening Education

# **Awareness Programmes And Capacity Building For changing the mindset of the people**

ES 24 | INCLUDING TIMESLIFE | PRICE ₹ 5



tt, Coleman &amp; Co., Ltd.

TIMES

I N D I A

2

TIMES CITY

SUNDAY TIMES OF INDIA, RANCHI  
SEPTEMBER 26, 2010

# Light of progress reaches to village in dense forest

Sanjay Ojha | TNN

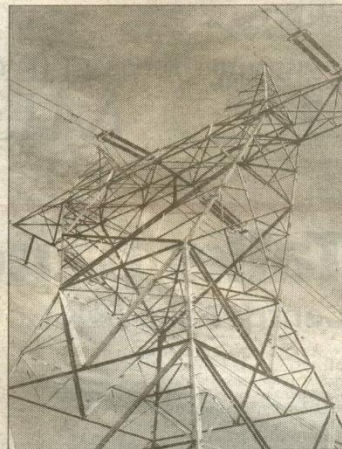
Chandwa (Latehar): Till 2007, Binod Thakur (48) used to work for more than 14 hours a day in digging mud that he supplied to a brick kiln to sustain a family of eight. Yet, at the end of every month he had to borrow some money from friends as Rs 4,000 he used to earn was not enough to sustain the family. Today, Thakur rides a motorcycle, carries a sleek smart cellphone, his five kids go to school, watch cartoon serials on television and drink chilled water in summer.

Somber Oraon (30), who worked as a daily wage-earner after completing his graduation, today boasts of being a civil contractor engaging 50 labourers.

The transformation in life of Binod and Somber is not an exception in this Maoist-hit Chandwa block of Latehar district where the power plant of Abhijeet Groups Corporate Power Limited is coming up. The company is setting up 1740 MW power plant that will come up in three phases, with an investment of around Rs 8,700 crore. The first phase of the power plant is expected to start commercial production in 2012.

The story is same for almost 4,000 people of Bana, Chakala and around a dozen villages of the area who used to lead a life of penury till a few years back. There was no electricity; basic civic amenities were absent for decades and no one dared to venture out of the house after sunset.

"When the officials of the company first came to us with the proposal to set up a power plant, we were very apprehensive. No one was ready to part with even an inch despite the company's offer to give a job to one member from each displaced family and Rs 5 lakh per acre of land that will be acquired," said Binod, who has parted with around two acres. At present, he earns around Rs 15,000 per month by running a canteen for employ-



ees of the company at the project site.

"The main reason for suspicion was the company's proposal to pay Rs 5 lakh per acre against the prevailing price of Rs 30,000 to Rs 1 lakh per acre in the area. The suspicion was so strong that officials of the company were taken hostage on a number of occasions by the villagers.

"We thought that the company was ready to pay such a high amount for even barren and forest land because it will not give job to the displaced," said Binod, adding: "But as days passed, they started giving jobs to people who parted with the land and our trust increased."

The prosperity is also evident from the fact that every household in the area has at least one two-wheeler and there is a four-wheeler in 10 to 15 families. Bana village alone has around 50 motorcycles, 10 four-wheelers, including three SUVs.

Septuagenarian Litta Oraon, uncle of Somber, too has tasted prosperity even though he is not associated with the project. "My family was dependent on agriculture and I had to face a lot of hardship to make both ends meet. For last four years, I am earning Rs 5,000 per month by renting a part of my house to workers of the company," said Litta, while taking a nap outside his house in the afternoon after having lunch.

The rent of a two-bedroom house is now Rs 5,000 to Rs 8,000. This is contrast to Rs 1,000 per month the company paid for a double-storey building in 2007. "Some people who have not got the desired benefits are, however, not happy though the number is very few," he added.

Senior deputy general manager P C Joshi, who is associated with the company from its inception, gives the credit to local people of this remote village in the heart of dense forest.

"As a company, we had to set up the plant. The way the people have accepted the need for change is commendable. Today, more than 4,500 people are associated with the company either as employee or business associate and are supporting the cause for development," said Joshi, adding that the support did not stop even after their security guards were killed in an attack last year.

The support which the company is getting from local people, chief executive officer Arun Gupta feels that they will be able to complete the project in record time. "We are getting all support from the villagers and we expect that we will complete the project before time," said Gupta.



Рис. 1. Структура индекса качества жизни населения Республики Беларусь по основным сферам жизни

Chakla (Lathbury, Dec. 11):  
Nannu Vello, playing cards  
with cranes under a banyan  
tree. Is photo of straight out of  
a game in Bharat. Only this  
Chakla black market. Chak-  
la. Men from Lathbury's dis-  
trict headquarters, has al-  
ready stepped in to the Great  
Indian Treasures, thanks to a big  
ticket investment.

"Chalky poor chromite ore (Chalka village is shrinking)," says the 55-year-old, "about the quantum effects of a billion Group's greenfield Alupur power plant — the state's biggest yet — with a quantum of investment pegged at Rs 10,000 crore. "We have already pumped in Rs 1,400 crore," said manager (commercial) A.K. Sinha.

Whether it is direct investment, cash inflow from foreign banks, direct or indirect employment or just corporate exposure, the sums of change are very large in Chabok's rugged surface. Mushrooms, fast food joints, pagers, houses, hair-cutting salons, and most importantly, villagers' mounting confidence live in the area. In what was once a rebel hot zone are some of the most delicious ones.

"No one dared to venture out after dusk. Today, people are out all day. There's electricity and roads, signboards. Chakla is linked to the world," said villager Sachin Kumar.

The change — from three-chord licks to double-stroked chords with television and baroque with television and with themselves — occurred in a mere 18 months. "Karen did her first live Baroque lute in 1992," says Baroque lute. "It will soon follow by the Baroque lute."

from landscapes to mild  
scape, change is all around. B

The Adelphi group currently employs just 6,000 people, many of whom are Chaldean or Chaldean residents.

"If earnings multiply 33 times, there's a sea change. When I first came here in 1996 for solo inquiries, I was scared. Crime and violence were rife," he added.

Norcross killed four guards last year — but the plant ended out with its work. "Our biggest strength have been the ideals, because we invested in fiber infrastructure. Apart from the rebel ideas, the main problem was that of power and road connectivity. We

**TURNING-POINT TIME:** Once mentioned by Newton, turning is now almost an apogee in cartoon and a primary chess (and) policy business of right is in jeopardy to most

"If earnings multiply 33 times, there's a sea change. When I first came here in 1996 for site inspections, I was scared. Crime and violence were rife," he adds.

Norcross killed four guards last year — but the plant ended out with its work. "Our biggest strength have been the ideals, because we invested in fiber infrastructure. Apart from the rebel ideas, the main problem was that of power and road connectivity. We

But village grocer Magdhan Harshu seems it up best. "Freshness rises itself, a day to make a difference," he says. "It is not about to grow in new Chakla."

But village grocer Manjula Harshi wants it up best. "From one rice meal a day to *bhaj*, also to *chowmein* now, Chakras

**Big ticket power plant lights up Latehar hamlet with jobs, fast food**



From one rice meal a day to  
much also to chowmein now,  
Chaka is a fairytale

MANJHA HANSDA  
A STORY

# The Telegraph

Villagers are also benefitting receptive to education and health schemes, which the government is undertaking with private partnership. Lathar deputy commissioner Rabiul Karim Parbuz agreed that more kids went to school now, as the district recently got a private school with the company's help.

health camps were a bigger draw now. "Private-public partnerships have caught on," he said. For instance, at a recent family planning camp organized by the company, villagers got shovels and carts, "humans voiced people to come. They left after learning something worthwhile," he added.

But development comes at a price. Water artists seem to be one, with more wells running dry. But there's no death of liquid of another kind, as cash-rich villagers have dis-

Adijest Group communications manager A.K. Sinha said they were aware that Chaudy changing face demanded greater community investments. "Under our corporate social responsibility model, we have separate programs for women's self-re-

Photo: Anand Kulkarni

theater, anti-liquor drives, and powerline aping sexual harassment. Our family members, and our family planning camps have both so markedly succeeded with the minority community—a significant 45 per cent demographic—in partnership with the district administration, that we could

But village greeter Maithu Harshi wants it up beat. "From one rice field a day to another, also to clowning now, Chakras

## Hindustan Times

EM-POWERING LIVES

# Chandwa town doesn't sleep at 6 anymore

B. Vijay Murty

■ vijaym@hindustantimes.com

**LATEHAR (JHARKHAND):** It was October 2006. Rajiv Goyal, a mechanical engineer from Punjab, had recently joined the Abhiject Group's power project in Jharkhand as chief construction manager.

The day he landed in Ranchi, he headed straight for the plant site near Chandwa — around 100 km from Ranchi — in Latehar district for inspection. It was 6 pm, an unsafe time to travel back by the road he came.

"Despite warnings, I set off only to find the roads deserted, the entire Chandwa market closed, and not a single soul on the highway up to a 30-km stretch," he



■ Supply of electricity to Chandwa — which falls in a Maoist-affected region of Jharkhand — means markets in the town can now stay open till 10 pm.

PARWAZ KHAN/ HT PHOTO

recalled. Goyal reached Ranchi safely. But passengers on a bus behind him were not as fortunate they were looted on the highway.

Latehar, one of the poorest and worst Maoist-affected districts in Jharkhand, was synonymous with killings, loot and Maoist violence.

Today, Chandwa is almost unrecognisable. With innovative strategies and community welfare, the company drew a 33-KV transmission line to Chandwa town from the nearby Kuda grid, 45 km away, at its own cost in 2007. And the initiative brought unimaginable results.

The town that generally had one hour of power every three days began getting more than 22 hours of electricity a day. The market now remains open till 10 pm.

Business has grown manifold. Crime rate has gone down considerably and Maoists have been restricted to few rural pockets.

"The creation of basic amenities and infrastructure after the improved power

scenario has improved the law and order situation in Chandwa town," said Latehar SP Kuldip Dwivedi.

Amarendra Kumar, owner of Khatri Jewellers at Chandwa market said, "The vastly improved power scenario has changed our lives. There is no fear any more."

The 1,080-megawatt power plant, the biggest in the state, is set to start production from August 2012. It has employed over 4,000 people, including some former Maoists. Company CEO Arun Kumar Gupta said, "Our ideology of providing development among the underprivileged perhaps matches the Maoists' ideology. That's why they are not disturbing our project."



# Focus Areas

- ☒ Education
- ☐ Health
- ☐ Rural Infrastructure
- ☐ Environment
- ☐ Sustainable livelihood
- ☐ Social Upliftment

# Education

Description	No. of Students	No. of Schools
Support to Schools	2500+	8
Scholarships to Students	500	3
Coaching Centers	360	14
Computer Centres	35	1
NFE Centres	65	3
Abhijeet DAV Public School	638	1
ITI Training + Polytechnic	123	5
Orphan School	100	1

# Snapshots



# Health

Description	No. of Camps	No. of Beneficiaries
Awareness Programme	28	1316
Rural Health Camps	54	3240
In-House Dispensary	1	More than 30000
Health Camps- Specialized	16	3787
Adoption of Health Sub Centre at Hempur, Chakla and Nagar	3	19710
Procatave measures for Control of Disease		18 villages

# Snapshots





# Rural Infrastructure Cont..

Description	No. of Beneficiaries
Construction of Transmission Line from Kudu to Chandwa	100 villages
Construction and Repair of Roads in villages	8 villages
Construction and Repair Culverts in villages	3 villages
Maintaining village Electricity	9 villages
Installation of Hand Pumps	38 Hand Pumps

# Rural Infrastructure Cont..

Description	No. of Beneficiaries
Repair of Hand Pumps	300 Hand Pumps
Construction and Repair of Wells	25 Wells
Construction and Renovation of Ponds	8 Ponds
Development of Play Ground	4 Playgrounds
Installation of Retro Reflective Display Boards	More than 300

# Rural Infrastructure

Description	No. of Beneficiaries
Repairing and Cleaning of River	1500 villagers
Construction of Akhara	13 Akhras
Repair of Community Centres	2 villages
Repair of House construction	2 families
Construction of Bathrooms	500 villagers
Repairing of Yaatri Sheds	All adjacent villagers

# Snapshots



# Environment

- **Development of Nursery for forestry plants**
- **Plantation in the periphery of Plant area**
- **Beautification of Colony Area**
- **Distribution of plants to villagers**
- **Beatification of District Administrative offices**
- **Identification of land owners for huge plantation in the rural areas**



# Snapshots



# Sustainable Livelihood

- **Sewing Centres**
- **Bamboo Article Making**
- **Nursery Development**
- **Dairy Development**
- **Running PDS Shop and its upgradation**
- **SHG Empowerment and Capacity Building**

# Snapshots





# Social Upliftment

- **Cultural Harmony**
- **Emergency Services**
- **Financial Help to poor people**
- **Distribution of Cloths**
- **Celebration of National and International Events**
- **Rescue of Girls from trafficking**
- **Sports and Events**

# Snapshots





# Monthly, Quarterly and Annual Newsletters



# Awards and Appreciation

## Awards:

- RIMS (Rajendra Institute of Medical Science), Ranchi
- JSACS( Jharkhand State AIDS Control Society), Ranchi
- Jharkhand Government (Mega Health Festival), Latehar
- Greentech Award, New Delhi
- Author in first book on CSR by INDIACSR at Mumbai

## Appreciation:

- Villagers
- Jila Parishad Member
- Block Development Officer
- Superintendent of Police
- Deputy Commissioner

# Awards and Appreciation



# Future Planning

- **Community Based Water Distribution System**
- **Training on Awareness and Capacity Building**
  - **Vocational Training Programs**
  - **Entrepreneurship Development Programs**
- **Supporting Professional Organizations and NGOs**
- **Facilitation centre for relevant assistance to new entrepreneurs**
- **Rural Infrastructure**
  - **Agri Business Centre**



# Media



**EMERGING HUB** Abhijeet Group's 1,080-MW power plant has drawn hundreds of crores of rupees transforming the socio-economic scenario of Chakla village

**D**espite its remote position, this village stands out for its proximity to the beach. Known as a non-descript village in the context of South Indian society, Kogiloor is a small, Christian village in Changanassery, Kerala. Indeed, there are a whopping 1,000 Christians, despite the fact that it is a Hindu-majority area. Attributed largely to colonialism, here in 2000,

The Alltel Group's 1,000-MW power-generation plant has not only kept the flow of about 200 Alltelers, much 50%, but has also restored phone lines in the economy at New Orleans.

• **Prison** (Massachusetts) helps reduce mass-incarceration with poverty and health care. Unlike former high-incarceration prisons (noted) by, the state-the-act action have reduced the same illness, possibly identical with each inmate placed in the same treatment.

The introduction of a low-kernel rice variety by some leading corporate houses for export is a step change in the socio-economic condition of the village. The Agrifood Group alone has kernelless rice 2500 acres in the area. Of the corporate houses that are now engaged in the growth of the area include, Tata Power and Adani's industries.

Champion Power Limited (CPL), as all of the Allagash Group's companies is presently involved in setting up a first phase of 1,000 MW in the first two oldest basins (Mack and 3000 ft above 600 M.W. plant in the third phase). The work on the first phase, which is projected to begin in 2005, is planned to start in 2005, is going on in 2005, while the second phase will be completed by the end of 2005.

"The impact of SMO recovery is more widely anticipated with respect to the redevelopment of the plant in Florida than it is. A larger amount of the money has been paid in nearly 500 private debt-covered claims. There has been apparently increased," said Robert Smith,

A photograph of a large industrial facility, likely a power plant or refinery. The image shows a tall, slender smokestack on the right side, and several large, multi-story buildings in the center and left. Some buildings appear to be under construction or renovation, with visible scaffolding and structural elements. The foreground is a flat, open area, possibly a parking lot or a cleared field. The sky is clear and blue.

— (Below) A view of the Kibbutz Group's power plant at Chalka village in Chardam of Lachish district. (Right) With many leading corporate companies pumping its money, new housing complexes are being developed in the area.

Clu's chief construction manager

Georgi further said: "The CPS has plans to spend over \$1000 more on this program over the next."

[illegible]

bank loans their required wealth by paying expensive bribes. How Tala deflected Mahinder Koppoo's onlookers of half-built hulk houses," said Anand Kumar Shahi, a member of Shri Maa's family. "Only two families in the village, who do not possess a piece of land, are worth BPS," said Shahi.

Repetitive Chicanos finding a local market, road "kings" flourish off the village who earlier worked as daily wage earners to get both ends meet. Some now

employed in various ways for human and canine. This is an important tool in the life of the child.

The cash flow has resulted in significant new investment in infrastructure among the villagers. They are taking up construction projects, expanding the housing they have put in local land. The security of the steady Chaudhry market, too, has created a boom, where sale of consumer items have registered a significant rise in the last few years.



http://epaper.prabhatkhabar.com  
www.prabhatkhabar.com

# प्रभात खबर

झारखंड का सर्वाधिक प्रसारित दैनिक

क्रिश्चमस नहीं आंदोलन

• रांची, बुधवार, 11 नवंबर 2010 ( कार्तिक शुक्ल ८, संवत् 2067 ) • रांची, पटना, जमशेदपुर, धनबाद, देवघर, कोलकाता, सिलीगुड़ी और मुजफ्फरपुर

## पूरे झारखंड को रोशन करेगा चंदवा

चंदवा से लौट कर सुनील चौधरी

रांची : कभी खुद अंधेरे में रहनावाला चंदवा प्रखंड अब कुछ ही दिनों में पूरे झारखंड को रोशन करेगा। यहां दो-दो पावर प्लांट लगने जा रहे हैं।

यह अजीब इतिहास है कि वर्ष 2006 के पूर्व चंदवा के लोग अंधेरे में रहते थे, लालटेन के सहारे इस घोर नक्सल प्रभावित इलाके की जिंदगी चलती थी। अभिजीत ग्रुप के अधीन कॉरपोरेट इस्पात ने इस राज्य में पावर प्लांट लगाने के लिए एमओयू किया। चंदवा प्रखंड में ही स्थित चितरपुर कोल ब्लॉक का आर्बेन कंपनी को हुआ। कंपनी के लोग चाहते थे कि कोल ब्लॉक के समीप ही पावर प्लांट लगे। कंपनी के चीफ कंस्ट्रक्शन मैनेजर राजीव गोयल साइट देखने लगे। वहां की स्थिति देख उनका मन खामखा रहा था। एक ही नक्सल इलाका, सड़क नहीं, बिजली नहीं, यानी हर तरह समस्या ही समस्या। फिर भी उन्होंने हिम्मत करके प्लांट के प्रस्ताव पर सहमति दे दी। कंपनी के सीडिओ अरुण गुप्ता यहां गये। उन्होंने भी प्लांट लगाने पर सहमति दे दी। इसके बाद चंदवा की नयी इबारत लिखी जाने लगी। बिजली की समस्या थी। कंपनी के चीफ कंस्ट्रक्शन मैनेजर श्री गोयल बताते हैं कि हमने सबसे पहले बिजली की समस्या दूर करने की पहल की। ध्यान रहे कि यह काम जमीन अधिग्रहण से पहले की गयी। 45 किमी लंबा ट्रांसमिशन लाइन बिछाया गया। कुछ से चंदवा बालूमाथ तक। कंपनी ने इस पर 18 करोड़ रुपये खर्च किये और चंदवा के साथ कुछ ही रोशन हो गया। आज यहां रांची की तरह 20 से 22 घंटे तक लगातार बिजली रहती है। स्थानीय निवासी मानू गंधू बताते हैं कि बिजली आने से बाजार में रौनक आ गयी है। शाम छह बजे तक चंदवा बाजार बंद हो जाता था। अब नौ से दस

बजे रात तक खुला रहता है। कुछ यही बात चंदवा के चकला गांव निवासी आसिर खान भी कहते हैं। वह कहते हैं कि पहले तीन-चार हजार रुपये कमाते थे। अब प्लांट लगने से हमारी कमाई बढ़ गयी है। कर्मकाज के अवसर बढ़े हैं।

इसके बाद कंपनी ने शुरू किया भूमि अधिग्रहण का काम। अबतक 464 एकड़ जमीन ली जा चुकी है। कंपनी को एक हजार एकड़ जमीन लेनी है, जिसमें 700 एकड़ की प्रक्रिया अंतिम चरण में है।

**सांप्रदायिक सौहार्द की मिसाल**

जमीन लेने के बाद कंपनी ने वहां पर सबसे पहले मां दुर्गा का एक मंदिर बनाया। मंदिर का निर्माण स्थानीय मुरालिम टेकदार कमरुद्दीन ने कराया है। इसके बाद शुरू हुआ सिविल कंस्ट्रक्शन का काम, जो लगभग पूरा हो चुका है।

**दामोदर नदी से आयेगा पानी**

यहां से दामोदर नदी की दूरी करीब छह से सात किमी है। नदी से पाइप लाइन के जरिये प्लांट साइट के रिजर्वॉयर में पानी लाया जायेगा। यह रिजर्वॉयर प्लांट से पांच किमी की दूरी पर है। इसके बाद रिजर्वॉयर से पाइप लाइन के जरिये प्लांट तक पानी लाया जायेगा। श्री गोयल बताते हैं कि एक ही जगह सब कुछ करने पर जमीन की अधिक आवश्यकता पड़ती। इसलिए इसे तीन सेक्टर में बांट दिया गया। प्लांट

## उपलब्धि

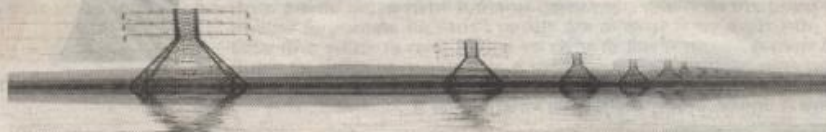
एरिया अलग है, रिजर्वॉयर अलग है और एश खड्ड अलग।

**दिसंबर 2011 में चालू होगा प्लांट**

कंपनी द्वारा यहां 540x2 तथा 660 मेगावाट के एक प्लांट का निर्माण कराया जा रहा है। दिसंबर 2011 में 540 मेगावाट का पहला प्लांट चालू हो जायेगा। अभी टरबाइन हॉल का स्ट्रक्चर खड़ा हो रहा है। सिंपलेक्स द्वारा सिविल कंस्ट्रक्शन किया जा रहा है। भेल को उपकरणों की आपूर्ति के आर्डर दिये जा चुके हैं। प्लांट का निर्माण 8500 करोड़ की लागत से होगा।

**लोगों को साथ में काम से जोड़ें**

श्री गोयल बताते हैं कि जमीन लेना इतना आसान नहीं है। कंपनी ने लोगों को पार्टनर बनाया। उन्हें साथ काम में लगाया। जितने भी सिविल के ठेके हैं, सब काम स्थानीय लोगों को दिया गया। अभी दो हजार लोग यहां काम कर रहे हैं। प्लांट चालू होने पर अप्रत्यक्ष रूप से 10 से 15 हजार लोगों को रोजगार मिलेगा।



# दैनिक भास्कर

भारत का सबसे बड़ा समाचार पत्र समूह

गुरुवार

रांची | 23 जून 2011

आषाढ कृष्ण पक्ष-8, 2068

## बुलेट नहीं बिजली होगी चंदवा की पहचान

विशेष संवाददाता | रांची

विपरीत परिस्थितियों में भी राज्य में कुछ चीजें ऐसी हो रही हैं जो झारखंड को एक नई पहचान देंगी। लातेहार जिले का चंदवा भी अब अपनी अलग पहचान बनाने में जुटा है। वह दिन दूर नहीं जब बुलेट की खोफ के लिए जाना जाने वाला यह क्षेत्र पूरे देश में बिजली उत्पादन के लिए जाना जाएगा। रांची से नब्बे किलोमीटर की दूरी पर दुर्गम पहाड़ियों के बीच स्थित इस क्षेत्र की पहचान अभी अंधकार में है। अर्थात् पिछड़े क्षेत्रों में शुमार इस जिले को पिछली बार देश ने तब जाना था जब वहां नक्सलियों ने एक ट्रेन पर पूरी रात अपना कब्जा रखा था। पर अब स्थिति बदल रही है, झारखंड में पावर हब बनने की संभावनाओं की शुरुआत चंदवा से हो चुकी है। इस जिले में दो बड़े पावर प्लांट लग रहे हैं। एक अभिजित ग्रुप का दूसरा एस्सार ग्रुप का। अभिजित ग्रुप यहां से 12 सी मेगावाट बिजली का उत्पादन करेगा जबकि एस्सार दो हजार मेगावाट। दोनों से उत्पादन शुरू होने का लक्ष्य वर्ष 2012 है।



साफ है कि आने वाले दिनों में चंदवा से राज्य की कुल आवश्यकता से अधिक बिजली का उत्पादन होगा। इच्छाशक्ति हो तो सबकुछ संभव : अभिजित ग्रुप के चीफ कंसल्टेशन मैनेजर राजीव गोयल का मानना है कि इच्छाशक्ति हो तो कुछ भी असंभव नहीं। मामूली कठिनाइयों को छोड़ क्षेत्र के लोगों से कभी भी बड़ी समस्या उन्हें नहीं हुई। वह बताते हैं वर्ष 2008 में पावर प्लांट का काम शुरू हुआ इसके बाद वे लगातार वहां रह रहे हैं। पांच हजार लोग यहां काम

### दूर से दिखता है परिवर्तन

परिवर्तन की बागड़ी चंदवा से तीस किलोमीटर दूर से ही दिखने लगती है। राइकों के डिज़ाईर लगे सड़कों से अधिक डिस्टेंस बोर्ड न केवल वाहन चालकों को क्षेत्र की जानकारी देते हैं चरम सुरक्षा के लिए सड़कें भी करते हैं। लंबी सुस्तान सड़कों जैसे ही चंदवा से अभिजित ग्रुप के प्रोजेक्ट स्थल घकल गांव के लिए गुड़ती हैं, चिन्ता में परिवर्तन दिखता है। चंदवा बाजार में भी उर्वोर्षित इन्फ्रा, फ़ैक्ट्री तथा वोल्टों की बड़ी बसें दिखने लगती हैं। इनमें अर्थिकता पावर प्लांट से जुड़े लोगों की है। चंदवा बाजार भी अब रात नौ बजे तक खुला रहता है, बिजली से बाजार रोज़ाना रहता है। कई जगहों में भी बिजली लात बिजली आई है, दरअसल पावर प्लांट के लिए ही ग्रुप ने कुड़ से 33 कैंपी की लाइन अंतराह करीब की लाइन पर चंदवा तक लगाई है। इसका लाभ रास्ते में पड़ने वाले गांवों को भी मिलता है।

करते हैं। कंपनी बेहतरीन डीएवी स्कूल चला रही है कंपनी के द्वारा स्वास्थ्य कैप, ग्रामीण विकास के काम, लोगों को स्वरोजगार के लिए प्रोत्साहन, आईआईटी की शिक्षा, महिलाओं का सशक्तीकरण, लोगों में जागरूकता फैलाना, चांदर सप्लाय, तात्कालीन जिर्णोद्वार आदि किया जा रहा है। इससे लोगों का भरोसा कंपनी पर बढ़ा है। क्षेत्र का भी विकास हो रहा है। सुविधाएं किसी अच्छी नहीं लगती, कौन जानता है कि हमारे द्वारा संचालित स्कूल में नक्सली के बच्चे नहीं पढ़ रहे अथवा हमारे स्वास्थ्य कैप का लाभ उन्हें नहीं मिल रहा। गोयल बताते हैं कि कंपनी का लक्ष्य समय पर बिजली उत्पादन शुरू करना है, इसमें हम सफल होंगे। फरवरी तक पहले चरण में 560 मेगावाट तथा 2013 तक यहां से 1200 मेगावाट उत्पादन होगा। कितना हुआ काम : कंपनी ने दो चरणों के बिजली उत्पादन के लिए कंसल्टेशन का काम पूरा कर लिया है। पहले चरण के 540 मेगावाट बिजली उत्पादन के लिए एक इकाई में ब्यालर भी लगा दिया गया है।



# Web Media: Coverage by the largest portal on CSR in India

<http://www.indiacsr.in/en/?p=6857>

<http://www.indiacsr.in/en/?p=6680>

<http://www.indiacsr.in/en/?p=6738>

<http://www.indiacsr.in/en/?p=6752>

<http://www.indiacsr.in/en/?p=5420>

<http://www.indiacsr.in/en/?p=4425>

<http://www.indiacsr.in/en/?p=3143>

# Thank you